

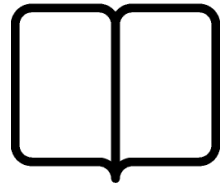
# YOUR LIBRARY

**1,629,430**

physical items checked out

**+35%** over 2017

**books•dvds•magazines•cds•audiobooks**



The Delaware County District Library has never seen an increase of this effect. Joining the Central Library Consortium had a positive impact on material circulation and renewals.



**70** hours per week open for business with **599,566** people through the door

**parents•jobseekers•students•retirees•genealogists**

Personal library patronage is up by **26%** from previous years. This is a safe space for community members to come and work, learn, rest and be entertained.

**71,504**

public computer internet sessions



wireless network clients

**32,635**

**research•gaming•connections•business•homework**

With more than 100,000 individual computer sessions, an overall increase of **25%** from 2017, patrons trust the library as a place for research and entrepreneurship, connection with family and friends, and lifelong learning.

**100**

staff members

**35** volunteers

@ 963 hours

**967** volunteers

@ 6,367 hours



**assisting•sorting•creating•promoting•enhancing**

The greatest asset the Library boasts is people! Staff, dedicated volunteers and volunteers give their time to make the Library the best it can possibly be. Without their work, it would not be the Delaware Library.

**93,769** registered cardholders



**101** patrons served in their homes

**94** preschool & senior living stops

**bookmobile•discoverybags•bookbaskets•memorybags**

The Community & Family Outreach Services department touches the lives of Delaware County residents who aren't able to otherwise make it in to a library branch. They reach patrons at home, school, the doctor's office and in the community.

**6,455** kids read over the summer



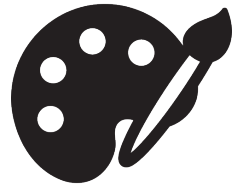
**64,943** kids attended **1,469** programs

**librariesrock•bookclubs•storytimes•workshops•arts**

Rock 'n roll ruled the Library as young readers celebrated the Summer Reading Club theme "Libraries Rock." Over the course of the year, nearly **65,000** young people attended programs at the Library - an average of **44** per program!

**3,214** adults attended **393** programs

**17,784** patrons used an online resource



**streaming•painting•reading•cooking•listening**

Between paint nights, book clubs, and Library-hosted trivia nights, adults in Delaware County are on a constant quest for knowledge and entertainment. Online research usage is up **15%** and program attendance increased **26%**!



**708,423** total items available for checkout



**chromebooks•boardgames•coloringbooks•hotspots•ebooks**

In addition to the traditional items one would associate with a library, the Delaware Library checks out many unique items like wifi-enabled laptops for students, tabletop games, role-playing games, adult coloring books, and hotspots.

**COMING SOON**

**What can you expect from your library in 2019?**

A makerspace will open at the Willis Education Center with classes & resources available for the public to use.



Tablets for children will be available for checkout.

Plans will be laid for the new Liberty Township Branch Library.



Groundbreaking is anticipated for 2020. Branch renovations will be made.



**YOUR LIBRARY.**