

ADDENDUM #2
ORANGE BRANCH PARKING LOT
DELAWARE COUNTY DISTRICT LIBRARY

DATE OF ADDENDUM

Friday, September 10, 2021

This Addendum shall become part of and modify the original Contract Documents for the above-referenced project. The Bidder shall verify receipt of this Addendum, thereby acknowledging that the contractor is fully aware of the contents found herein.

This Addendum is being issued to provide additional clarification on the plan sheets, additional information related to the project including plan notes and details and to respond to questions submitted by Bidder's during the written questions submittal period.

1.1 CONTRACT DRAWINGS REVISIONS

- A. Sheet 1:
 - 1. **Additional full-depth pavement areas have been added. These areas will be heavy-duty pavement areas per Detail 1 on Sheet 2.**
 - 2. **The quantity of asphalt planing and overlay has been modified to account for the additional full-depth removal.**
 - 3. **A note has been added directing the Contractor to replace damaged concrete wheel stops as necessary. A detail for new concrete wheel stops has been added to Sheet 2.**
- B. Sheet 2:
 - 1. **Detail 2 has been updated to note ODOT 702.17, Type 2 crack sealant.**
 - 2. **Detail 3 for partial depth removal has been removed from the project.**
 - 3. **Detail 7 has been added for concrete parking blocks.**

1.2 BID DOCUMENT REVISIONS

- A. The Engineer's Estimate has been revised to: \$160,000.00

1.2 BIDDER'S QUESTIONS

- B. What will be the required depth of the Mill and Overlay, 1-1/2" or 2"?

The mill and overlay depth should be 2".

- C. Is the Detail on Partial Depth Pavement repair correct?

The partial depth detail has been removed from the project.

- D. Do you require us to give the unit prices with the Bid?

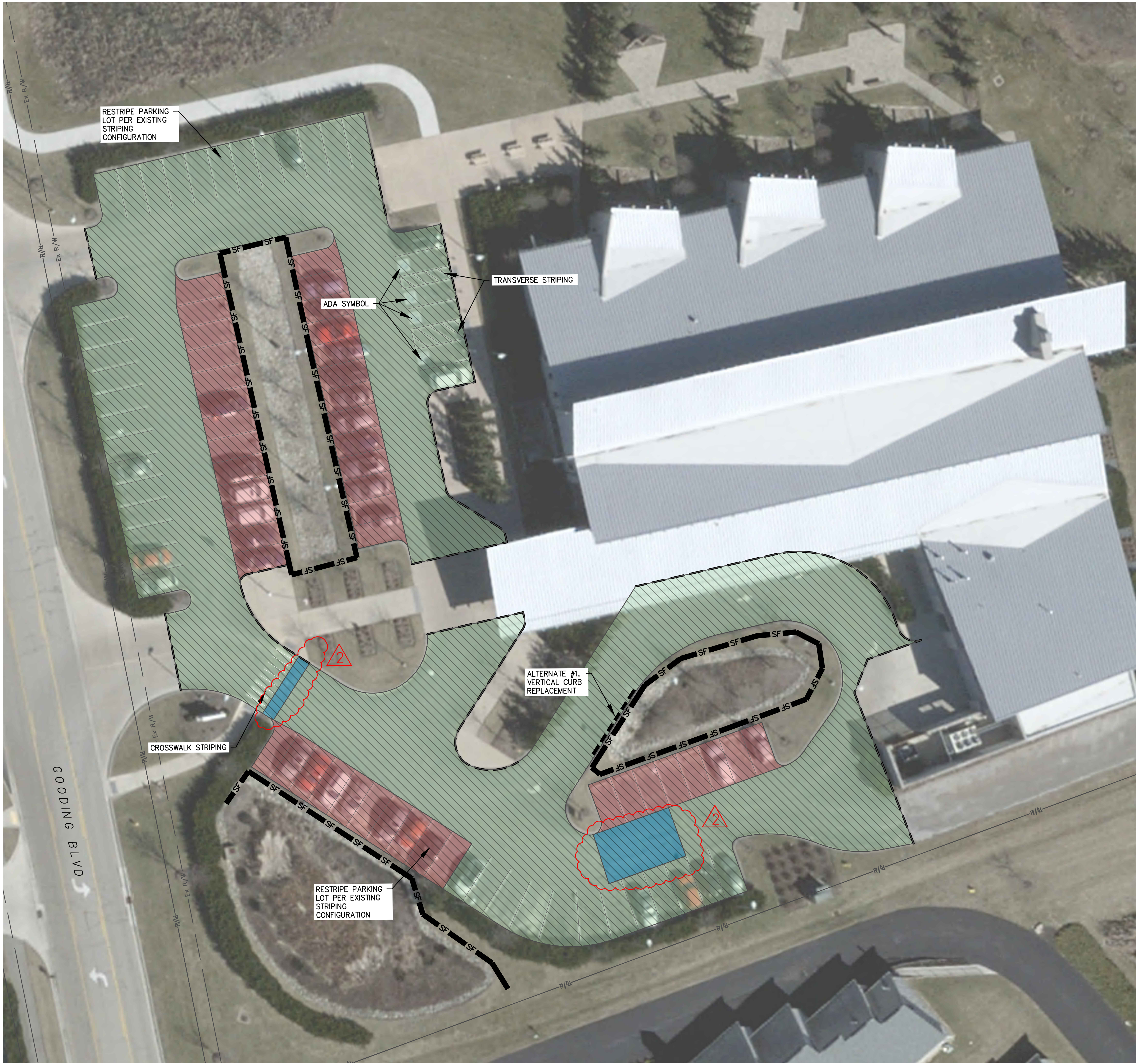
The bid is lump sum, however unit prices should be provided to establish payment pricing in the event that additional work is required.

- E. Will crack sealing per ODOT Item 423 be Type 2?

Yes, Crack Sealing per ODOT 423 should be Type 2. Detail 2 on Sheet 2 has been updated to indicate this specification.

END OF ADDENDUM #2

E:\DELEWARE COUNTY LIBRARY\21-00326-010 ORANGE BRANCH PARKING LOT CAD\DWG\SET SHEET 21-00326-010.dwg 9/10/2021 10:15:51 AM



- NOTES:
1. AERIAL PHOTOGRAPHY WAS OBTAINED FROM OGRIIP 2019 (OHIO GEOGRAPHICALLY REFERENCED INFORMATION PROGRAM) THIS INFORMATION MAY NOT BE REPRESENTATIVE OF EXISTING CONDITIONS IN ALL AREAS.
 2. THE QUANTITIES PROVIDED ARE FOR REFERENCE ONLY. THE CONTRACTOR ASSUMES RESPONSIBILITY FOR VERIFYING THE ACCURACY AND COMPLETENESS OF THE DATA.
 3. CONTRACTOR IS RESPONSIBLE FOR MAINTAINING POSITIVE DRAINAGE ON ALL NEW PAVEMENT SURFACES. PAVEMENT AREAS SHOULD DRAIN TOWARD EXISTING DRAINAGE STRUCTURES AND BIORETENTION AREAS. SHOOTING GRADES AND ESTABLISHING ELEVATIONS SHALL BE PROVIDED BY CONTRACTOR.
 4. PAVEMENT STRIPING SHOWN IS ESTIMATE USING AERIAL PHOTOGRAPHY AND DOES NOT REFLECT EXACT MEASUREMENTS OR STRIPING CONFIGURATION. STRIPING CONFIGURATION SHALL BE RECORDED AND MEASURED TO VERIFY EXISTING CONFIGURATION AND ENSURE THAT STRIPING IS REPLACED PROPERLY.
 5. CRACK SEALING PER ODOT 423 SHALL BE INSTALLED WHERE PAVEMENT MEETS EXISTING CONCRETE CURB AND/OR CONCRETE APRONS.
 6. SAWCUT EXISTING PAVEMENT FOR CLEAN EDGE WHERE PAVEMENT IS REMOVED FULL DEPTH ADJACENT TO EXISTING CONCRETE APRONS AND CURB.

LEGEND:

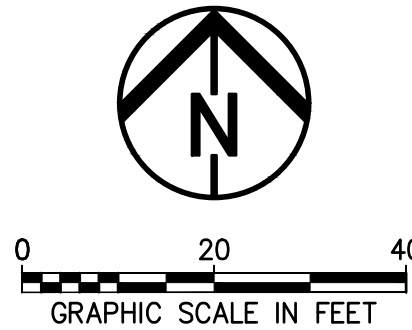
2" ASPHALT PAVEMENT PLANING
2" ODOT 448 TYPE 1 ASPHALT
RESURFACING, 30,440 SF

ASPHALT PAVEMENT REMOVED AND
REPLACED FULL-DEPTH WITH
STANDARD DUTY, 7,810 SF

ASPHALT PAVEMENT REMOVED AND
REPLACED FULL-DEPTH WITH
STANDARD DUTY, 770 SF

ORANGE SILT FENCE

ALTERNATE #1, CONCRETE
CURB REPLACEMENT, FULL
DEPTH, 35 LF



BID SET

AKRON / CLEVELAND / COLUMBUS
450 GRANT ST., AKRON, OH 44311
P 330.575.1590 / F 800.855.1590
W ENVDESIGNGROUP.COM

Know what's below.
Call before you dig.

ORANGE BRANCH PARKING LOT
DELEWARE COUNTY LIBRARY

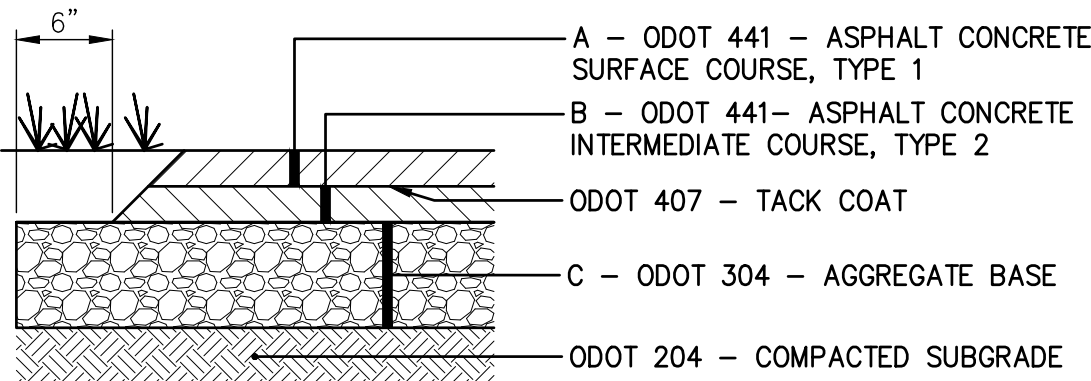
Delaware County District Library

BIDDING		
DATE: _____		
REVISIONS		
Δ	DATE	DESCRIPTION
1	8/10/2021	ADDENDUM #1
2	9/10/2021	ADDENDUM #2
####	####	####
####	####	####
####	####	####
####	####	####
PROJECT NO.:		21-00326-010
DRAWN BY:		CMR
CHECKED BY:		JSO
DATE ISSUED:		08/30/2021
PARKING LOT PLAN		
1	OF	2

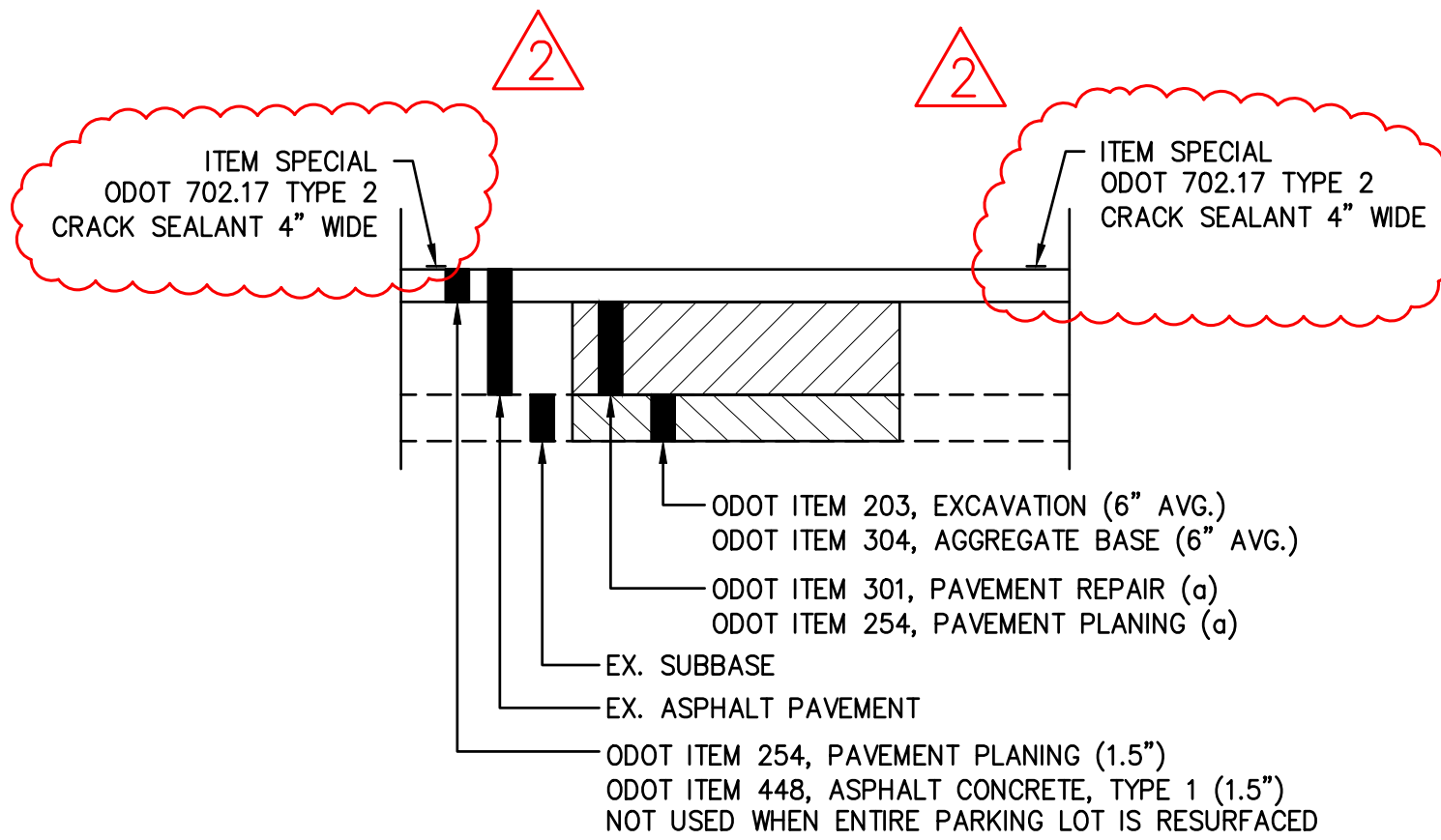
E:\DELEWARE COUNTY LIBRARY\21-00326-010 ORANGE BRANCH PARKING LOT CAD\DWG\ITEM 253.DWG 21-00326-010 21/10/2021 10:15:36 AM

ODOT ITEM 253 – PAVEMENT REPAIR

A QUANTITY OF THIS ITEM SHALL BE PROVIDED FOR USE AS DIRECTED BY THE OWNER. THIS ITEM SHALL CONSIST OF CUTTING AND REMOVING DETERIORATED PAVEMENT FULL DEPTH AND PLACING 6" ODOT ITEM 301 ASPHALT CONCRETE BASE, PG64-22. THE MAXIMUM COMPACTED DEPTH OF ANY ONE LAYER SHALL BE 6 INCHES. UNLESS OTHERWISE DIRECTED BY THE OWNER, THIS ITEM SHALL BE PERFORMED AFTER THE COMPLETION OF PAVEMENT PLANING OF THE EXISTING ASPHALT CONCRETE SURFACE COURSE, AS SHOWN IN THE DETAIL. ALSO, THIS ITEM SHALL COMMENCE WITHIN 7 DAYS OF THE COMPLETION OF PAVEMENT PLANING. IT IS NOT THE INTENT TO REPAIR EVERY DETERIORATED AREA WITHIN THE PROJECT. THE OWNER SHALL DETERMINE WHICH AREAS ARE TO BE REPAIRED IN ADDITION TO MARKED AREAS, IF NECESSARY. PAYMENT SHALL BE BASED ON THE ACTUAL NUMBER OF SQUARE YARDS OF PAVEMENT REMOVED AND REPLACED TO THE LIMITS DESIGNATED BY THE OWNER. CONTRACTOR IS ADVISED THAT AN ASSUMED PAVEMENT SECTION (SURFACE, INTERMEDIATE, AND BASE) OF 4" WAS USED FOR THIS DETAIL AND ACTUAL FIELD CONDITIONS COULD VARY. IF EXISTING PAVEMENT THICKNESS IS LESS THAN PROPOSED PAVEMENT, EXCAVATE SUBBASE TO REQUIRED DEPTH FOR PROPOSED PAVEMENT.



ASPHALT PAVEMENT	TYPE	A	B	C
		SURFACE COURSE	INTERM. COURSE	BASE COURSE
STANDARD DUTY		1.5"	4.5"	6"
HEAVY DUTY		1.5"	6"	6"



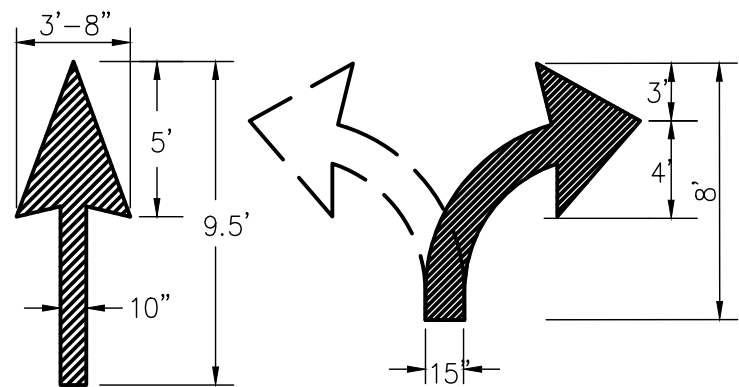
LOCATION	TYPE	a
LIGHT DUTY	'I'	3 1/2"
MEDIUM DUTY	'II'	4 3/4"
HEAVY DUTY	'III'	6"



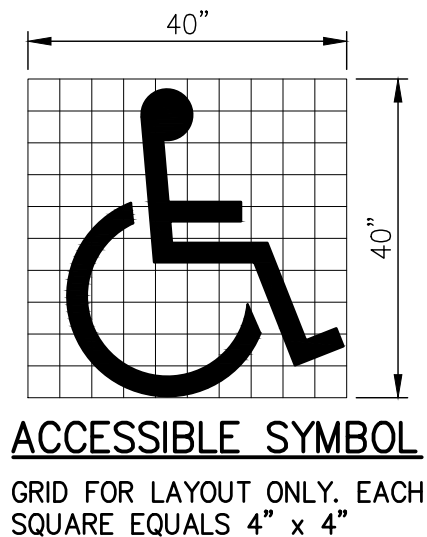
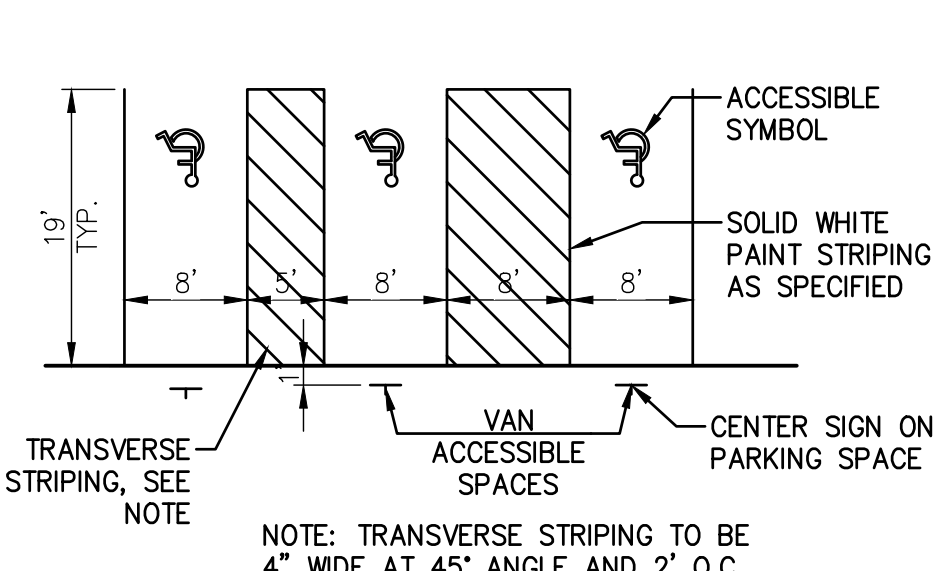
1 ASPHALT PAVEMENT SECTION
2 NOT TO SCALE

2 FULL DEPTH REPAIR
2 NOT TO SCALE

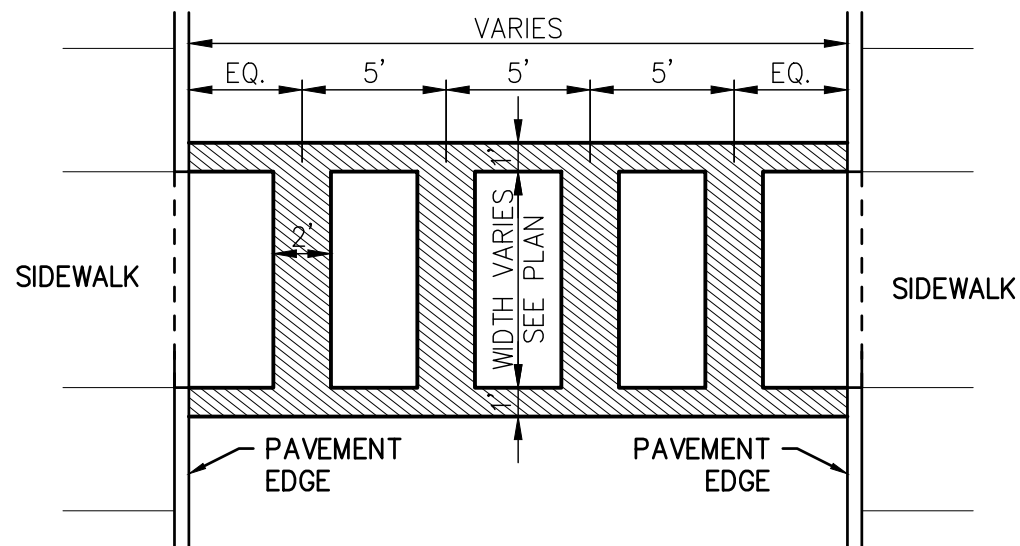
3 NOT USED
2 NOT TO SCALE



4.1 PAINTED ARROW
NOT TO SCALE

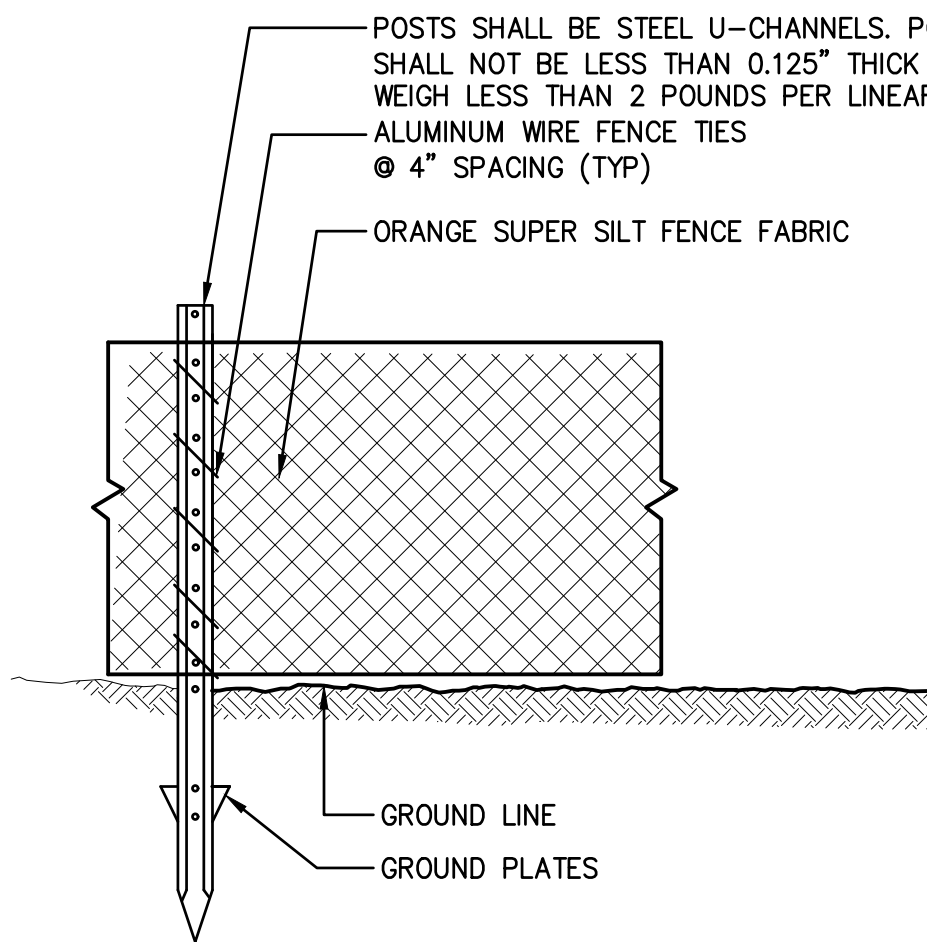


4 PAVEMENT MARKING
2 NOT TO SCALE

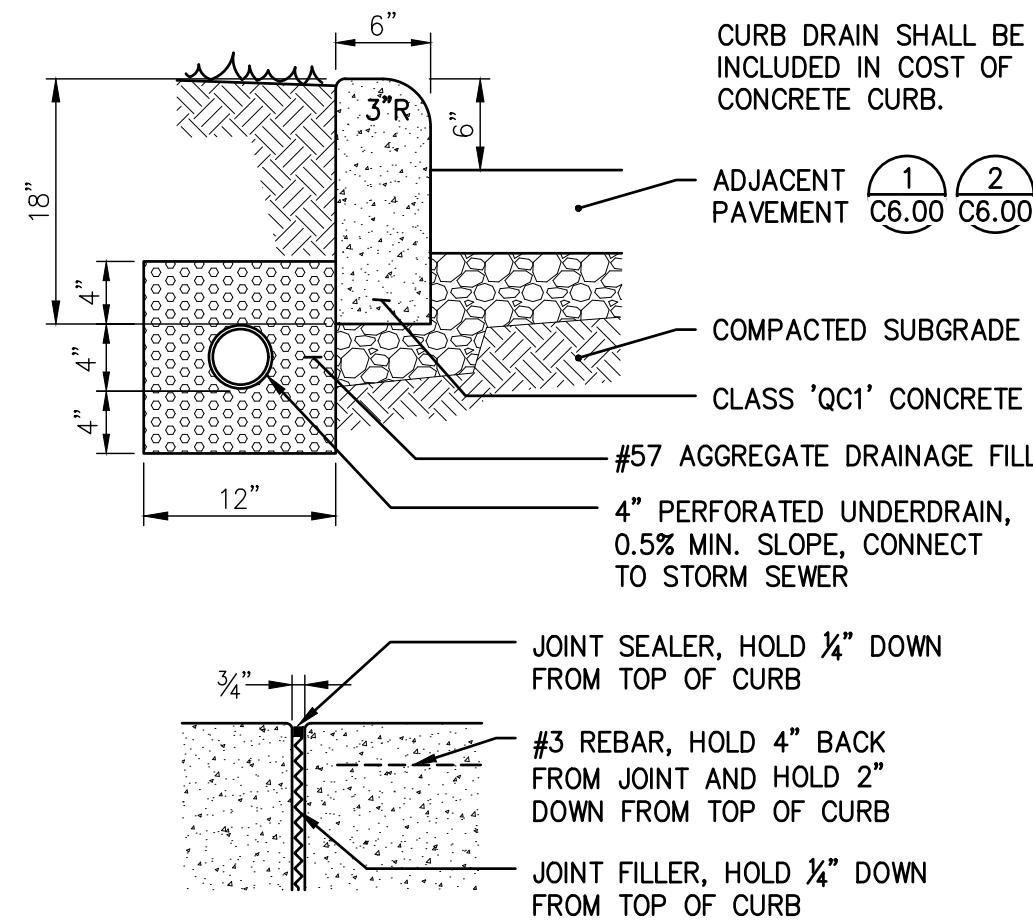


- NOTES:
- CROSSWALK STRIPING SHALL BE WHITE.
 - FIELD VERIFY EXISTING CONDITIONS OF CROSSWALK IF REQUIRED ADJUST DIMENSIONS STARTING FROM THE CENTER.
 - ADJUST CROSSWALK DIMENSIONS TO MINIMIZE WEAR ON THERMOPLASTIC MATERIAL.

- NOTES:
- FENCING SHALL BE INSTALLED ALONG THE PERIMETER OF BIORETENTION AREA PRIOR TO START OF CONSTRUCTION AS INDICATED ON THE DRAWINGS. FENCING SHALL BE MAINTAINED THROUGHOUT THE PROJECT AND REMOVED AS DIRECTED BY THE ENGINEER.
 - INSTALL FENCE FABRIC ON WINDWARD SIDE OF POSTS.



5 ORANGE SILT FENCE DETAIL
2 NOT TO SCALE



VERTICAL CONTROL JOINT

6 CONCRETE CURB - VERTICAL
2 NOT TO SCALE

BIDDING

DATE: _____		
REVISIONS		
Δ	DATE	DESCRIPTION
1	8/10/2021	ADDENDUM #1
2	9/10/2021	ADDENDUM #2
####	####	####
####	####	####
####	####	####
####	####	####
####	####	####
PROJECT NO.: 21-00326-010		
DRAWN BY: CMR		
CHECKED BY: JSO		
DATE ISSUED: 08/30/2021		

SITE DETAILS